

Mahla'asgum

Saw'winsk

Mmaal
APRIL EDITION



Ja'ii Jamboree 2026

April 25th 2026 marked the 5th Annual Ja'ii Jamboree. Well over 260 Nisga'a attended the Jamboree and I saw well over 2 or 3 of the butterfly tribe in attendance as well. The very first Ja'ii Jamboree started May 1st 2022 to celebrate the arrival of the salmon to the river, but someone must've forgot to tell the salmon this year because when I looked I didn't see any salmon in the river. Maybe they were having their own jamboree. Or maybe it's because the event had to be moved to accomodate other events. I like to think it was the former rather than the latter.

The Gitlax̄dax Sayt-K'ilim-Goothl Nisga'a Dancers started the event off, followed by the Gitlax̄t'aamiks Ceremonial Dancers, then the Gitwinksihlkw Four Crest Dancers, and finally the hosts, the Lax̄galts'ap Cultural Dancers, closed out with some powerful performances. The event was originally planned to be a two-day event, but was shortened to one day after some groups had to cancel. Despite the absences and shortened agenda, the event was a powerful showcase of the Nisga'a Nation's voices.

I thoroughly enjoyed photographing the event and I hope I did all the dancers and drummers justice with my photography, my apologies if I missed anyone or if your photo didn't turn out, it's not my intention to leave anyone out. Please don't pull my jooks if I did.

~Stirling Tait, Communications Manager





Nisga'a Students Set Their Sights on Japan

Forty students from Majagaleehl Nisga'a Secondary School prepare for a once-in-a-lifetime music and cultural immersion tour

Dates: May 14–23, 2026 · 40 Students + 6 Chaperones · Approx. \$260,000

This spring, forty students from Majagaleehl Nisga'a Secondary School (MNSS) will embark on an extraordinary ten-day journey to Japan — the most ambitious undertaking the NESS Band Program has organized to date. Accompanied by six dedicated chaperones, the group will immerse themselves in Japan's rich musical traditions, ancient history, and vibrant contemporary culture.

On April 28, families and community members gathered at the Laxgalts'ap Community Centre for a Meet & Greet to learn about the trip and celebrate the students ahead of their departure.



Cultural School Exchange: Students will connect with Japanese peers, sharing music, stories, and traditions across two very different worlds.

Tokyo DisneySea: A well-earned day at one of the most celebrated theme parks on the planet, renowned for its stunning design and immersive storytelling.

MUSIC & CULTURAL HIGHLIGHTS

Taiko Drumming Workshop: Students will train with experienced taiko practitioners, learning the powerful rhythms and physical discipline behind Japan's most iconic percussive art form.

Traditional Japanese Instruments Workshop: Hands-on instruction with the koto, shamisen, and shakuhachi — offering a window into centuries of musical heritage.



“This cultural exchange tour is more than a trip—it’s a celebration of music, learning, and unity. The Majagaleehl Nisga'a Secondary Students will return with new skills, global perspectives, and cherished memories that will last a lifetime.”



THE SIGHTSEEING ITINERARY

TOKYO: Imperial Palace Plaza · Harajuku & Omotesando · Shibuya Crossing & Hachiko Statue · Asakusa Kannon Temple & Nakamise Street · Tsukiji Outer Market

KYOTO: Kinkaku-ji · Kiyomizu-dera Temple · Fushimi Inari Taisha · Teramachi & Nishiki Market

HIROSHIMA: Peace Memorial Park & Museum · A-Bomb Dome (Genbaku Dome) · Miyajima Island

NARA: Todai-ji Temple · Nara Deer Park

This trip is an incredible achievement for MNSS's music program and a profound opportunity for the forty students making the journey.





Heavy Equipment Operator Training Held in New Aiyansh

Gitmidiik Group is hosting an Interior Heavy Equipment Operator School providing community members with hands-on training and a pathway into one of the region's most in-demand trades.

The program began on April 13, 2026, with classes running daily starting at 8:00 a.m. Ten student seats were available, and participants committed to the full twelve weeks of training. Attendance and dedication were essential, as the curriculum moved quickly through a wide range of machinery.

Over the course of the program, students gained practical operating hours across six pieces of heavy equipment: 100 hours on the excavator, along with 25 hours each on the rock truck, loader, dozer, grader, and skidsteer. By the end of training, graduates left with a well-rounded skill set that opened doors to employment in construction, forestry, mining, and resource development across the Interior and beyond.

This training opportunity is ongoing, and Gitmidiik Group encourages anyone interested in future intakes to reach out for more information about eligibility and how to apply.



Empowering Nisga'a.

Building Success.

One Career At A Time.



GITMIDIK GROUP

Special Assembly Banquet

AWARDS CEREMONY

Two Categories:

- Student Achievement
- Life Time Achievement

Nisga'a Lisims Government is now accepting nominations; request a nomination form via email.

**MAY 11,
2026**

5pm
Gitlaxt'aamiks
Recreation Centre

CONTACT

Zariah Clayton,
zariahc@nisgaanation.ca



Nisga'a Lisims Government

SPECIAL ASSEMBLY BANQUET NOMINATION FORM

NOMINEE'S INFORMATION

FULL NAME

VILLAGE

WILP

TRIBE

EMAIL

ARE YOU ABLE TO ATTEND AND ACCEPT THE AWARD?

DESCRIPTION OF ACCOMPLISHMENT

Sayt-K'ilim-Goot / one heart, one path, one nation

T 250 633 3000 / F 250 633 2367
TF 1 866 633 0888
PO Box 231 / 2000 Lisims Dr
New Aiyansh BC / Canada V0J 1A0
NISGAANATION.CA

Sayt-K'ilim-Goot / one heart, one path, one nation



May is Mining Month!

DIG INTO HEALTH & WELLNESS

SMITHERS

Smithers Bulkley Valley Regional Pool and Recreation Centre
1316 Toronto Street, Smithers, BC

May 3, 10, 17, 24, 31

Pool Sponsored swimming
Times: 1:00pm – 3:00pm

HOUSTON

Houston Leisure Facility
3400 14th Street, Houston, BC

May 3, 10, 17, 24, 31

Pool Sponsored swimming
Times: 11:00am – 5:00pm

TERRACE

Terrace and District Aquatic Centre
4540 Park Ave Terrace, BC

May 3, 10, 17, 24, 31

Pool Sponsored swimming
Times: 1:00pm – 4:00pm

May 2026						
SUN	MON	TUE	WED	THU	FRI	SAT
					1	2
3	4	5	6	7	8	9
10	11	12	13	14	15	16
17	18	19	20	21	22	23
24	25	26	27	28	29	30
31						

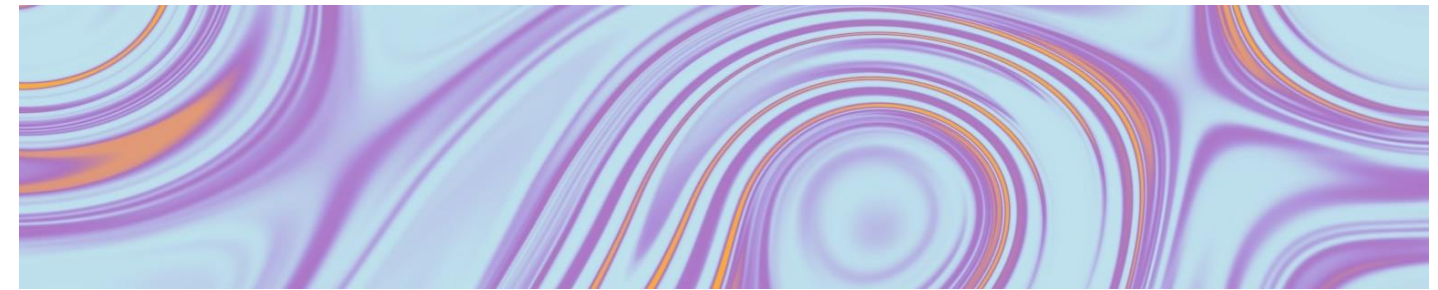
HAZELTON

Hazelton Gitanmaax Band
Tri-town Theatre,
4325 Field Street, Hazelton

Saturday May 9 (*Sheep Detectives*)
Saturday May 23 (*Mandalorian & Grogu*)

Both movies shown at 3 pm

Sponsorship of theatre tickets,
small pop and popcorn



2026							May Youth Calendar	
SUN	MON	TUE	WED	THU	FRI	SAT		
26	27	28	29	30	1	2		
					Youth Room closed			
3	4	5	6	7	8	9		
	Hide and Seek	Beaded Key Chain making	Outdoor Walk/Hike	Painting	Mothers Day Arts and Crafts			
10	11	12	13	14	15	16		
Mothers Day	Closed for Special Assembly	Closed for Special Assembly	Closed for Special Assembly	Closed for Special Assembly	Closed for Special Assembly			
17	18	19	20	21	22	23		
	Holiday (Closed)	Playground games	Free Play Day	Board Game Night	Supply Run (Youth Room Closed)			
24	25	26	27	28	29	30		
	Bracelet Making	Gym Games	Baking	Popsicle Making	Water Fight (Weather Pending)			
31	1	NOTES: Please ensure kids bring water bottle and the proper shoes for the activities planned. Youth Fee - \$5 a month						

YANSA'ALT

MAY 2026

SUN	MON	TUE	WED	THU	FRI	SAT
					1	2
					Nisga'a Fish & Wildlife Community Consultation	
3	4	5	6	7	8	9
			NLG Executive	NLG Executive	NLG Executive	
10	11	12	13	14	15	16
Mother's Day	Nisga'a Day Special Assembly of the Nisga'a Nation	Special Assembly of the Nisga'a Nation	Special Assembly of the Nisga'a Nation	Special Assembly of the Nisga'a Nation	Special Assembly of the Nisga'a Nation	
17	18	19	20	21	22	23
	STAT HOLIDAY Victoria Day		Career Fair	Career Fair	Career Fair	
24	25	26	27	28	29	30
	COW Meeting	COW Meeting	Regular Council		SCHEDULED GVG OFFICE CLOSURE	
31						

YANSA'ALT 2026 MAY SIMDALA'AM NAGATS'E

GANUTKW SUNDAY	KSGOOGAM SA MONDAY	HANIIGILP'IL HL SA TUESDAY	HANIIGWILAL HL SA WEDNESDAY	HANIITXALP'X HL SA THURSDAY	HANIIKWSD INSHL SA FRIDAY	HANIIVEEK SATURDAY
3	4	5	6	7	1	2
	LUNCH SALE	WELLNESS WEDNESDAY	CRAFT CLUB	BAKE SALE	CLOSED BUSINESS RUN	
10	11	12	13	14	15	16
MOTHER'S DAY	NISGA'A NATION SPECIAL ASSEMBLY					
17	18	19	20	21	22	23
STAT HOLIDAY VICTORIA DAY	LUNCHEON	WELLNESS WEDNESDAY	CRAFT CLUB	BAKE SALE		
24/31	25	26	27	28	29	30
	LUNCH SALE	WELLNESS WEDNESDAY	CRAFT CLUB	CLOSED		

gitax'taamiks
OF THE NISGA'A PEOPLE

ELDER'S CENTER
250 - 633 - 2067

HOURS
MONDAY - FRIDAY
9:00 AM - 4:00 PM
DROP IN ALWAYS
WELCOME

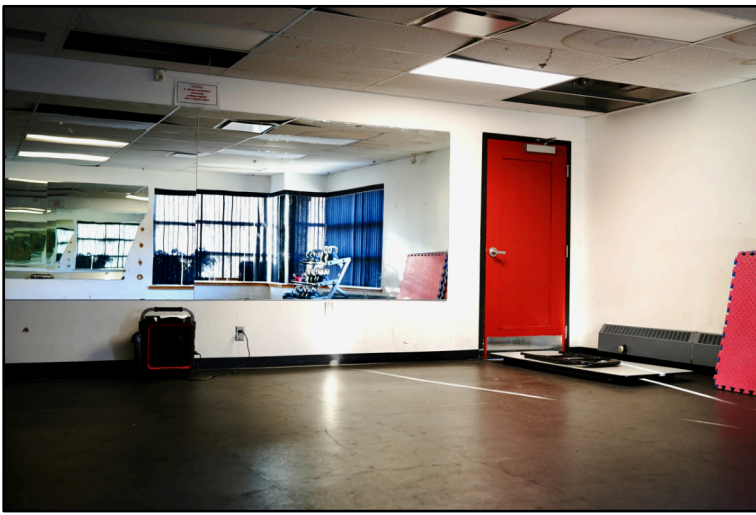
LUNCH SALES TUESDAYS
AT NOON -
LUNCHEON NO PURCHASE
NECESSARY

WELLNESS WEDNESDAY
MOVEMENT IS
MEDICINE
1-2 PM

CRAFT CLUB THURSDAYS
2-5 PM

**POP UP
BAKE SALES
OCCASIONALLY**





Fitness Room & Class Schedule

Weekly Weight Room and Mirror Room Schedule (7:15 PM Daily)

Monday: Strength Training (Kettlebells)

Tuesday: EMOM – Strength & Conditioning (Barbell/Dumbbell) – *Fitness Weight Room*

Wednesday: Stretch and Mobility – *Mirror Fitness Room*

Thursday: TABATA 40/20 Dumbbell Complex

Friday: HIIT Body Weight (Body Attack) – *Mirror Fitness Room*

Monthly Gym Fees: Please remember that fees are due at the beginning of each month.

- **Adult Rate:** \$10.00
- **Youth Rate:** \$5.00



GVG Zenfolio Gallery



Scan the QR code to view
more photos from our
galleries

